

Norfolk's Joint Health & Wellbeing Strategy

Dr S.J. Louise Smith

Director Public Health, Norfolk

Joint Strategic Needs Assessment

Norfolk Insight | Data Explorer | Area Profile | Search | Resources | Joint Strategic Needs Assessment | Help | Log In

here: Norfolk Insight | Joint Strategic Needs Assessment

Norfolk's Joint Strategic Needs Assessment (JSNA)

- People
- Place
- Healthy start
- Childhood health and wellbeing
- Adult health and wellbeing
- Older people's health and wellbeing
- Reports and activity
- Profiles and Health Needs Assessments

- News...
- Latest Changes...
- Content and Structure
- Help Guide

Norfolk County Council

Norfolk Health and Wellbeing Board

Norfolk key facts and headlines

Population estimate 885,000 mid-2015 ONS	Population projection 944,400 2025 (2014-based) ONS	Number of live births 9,052 2015 ONS	Low birth weight - term babies 2.7% 2014 ONS	Children in poverty (under 16) 17.9% 2014 HMRC
---	--	---	---	---

Email Us

<http://www.norfolkdata.net/jsna>

Joint HWB Strategy 2014-2017



- Promoting the social and emotional wellbeing of pre-school children



- Preventing obesity



- Making Norfolk a better place for people with dementia and their carers

Joint HWB Strategy 2014-2017



- Promoting the social and emotional wellbeing of pre-school children



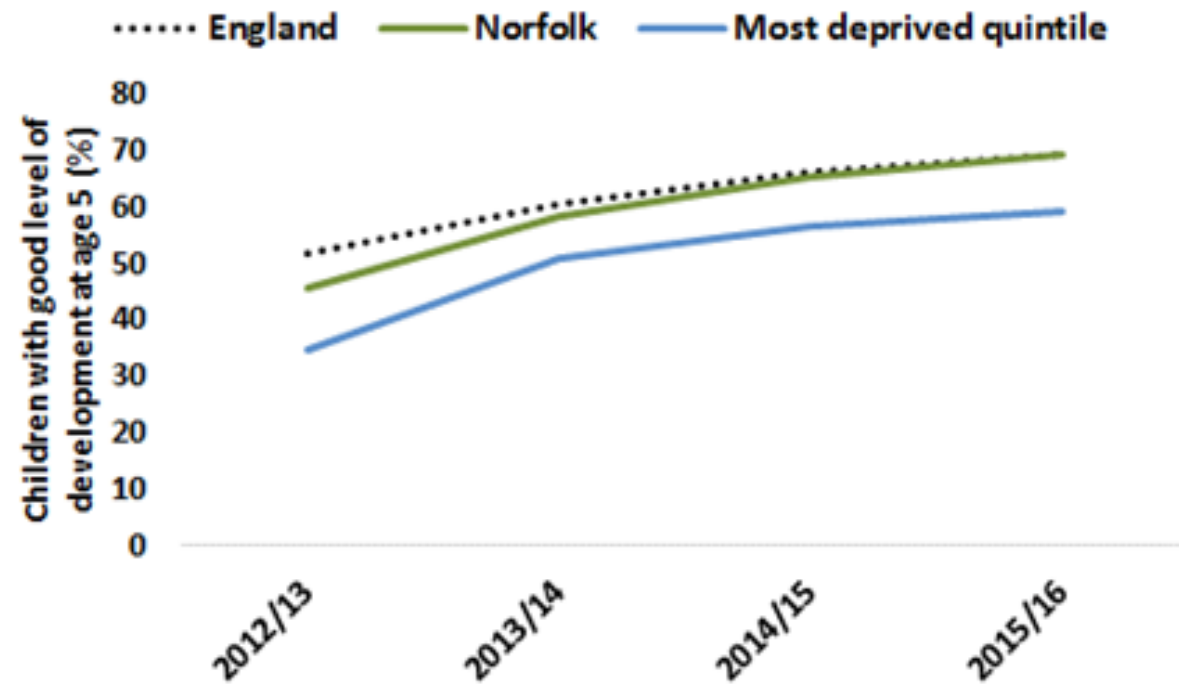
- Preventing obesity



- Making Norfolk a better place for people with dementia and their carers

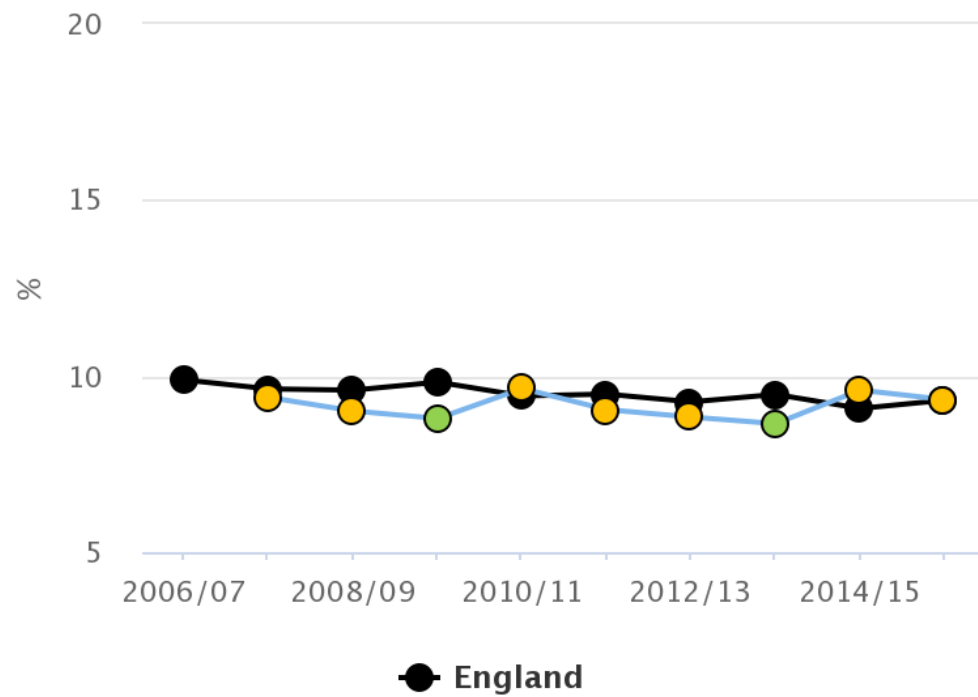


School Readiness

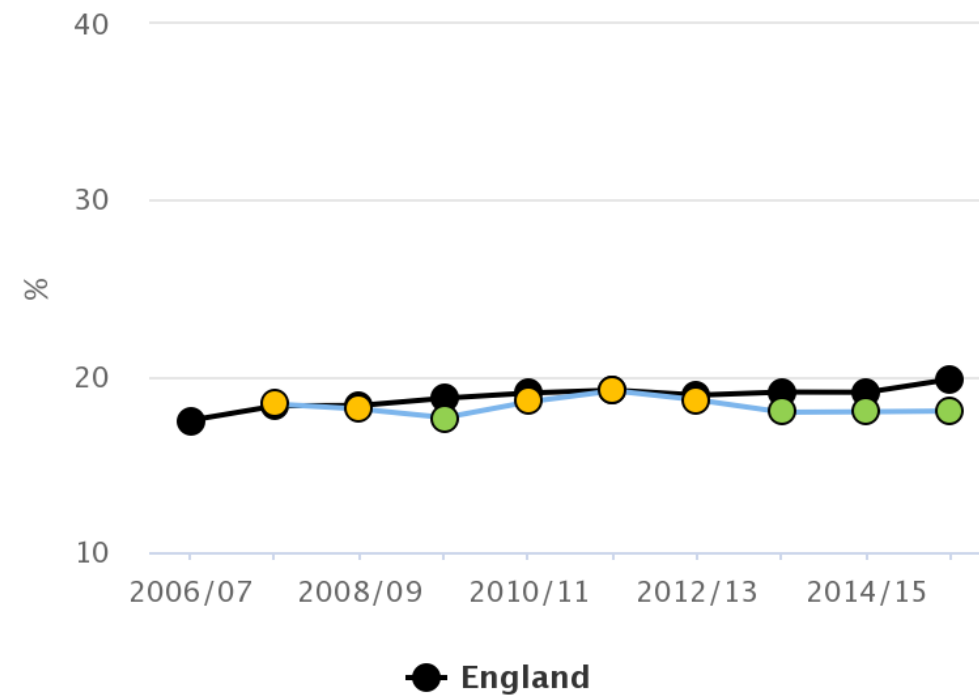


Preventing Obesity

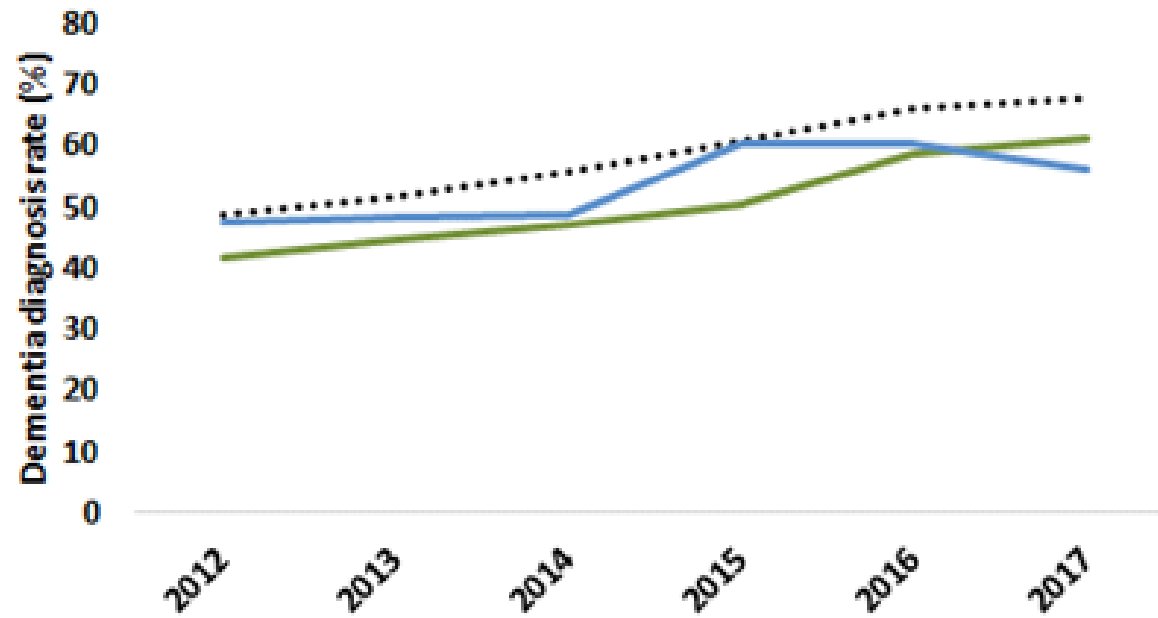
Obese children (4-5 years) - Norfolk



Obese children (10-11 years) - Norfolk



Diagnosing Dementia



Norfolk's Joint HWB Strategy 2018-22

- Keeping the focus on PREVENTION and PROMOTING INDEPENDENCE
- Reducing INEQUALITIES
- Driving INTEGRATION

Key Issues

1. Ensure children get the best start in life
2. Living well – making healthy choices and looking after ourselves
3. Promoting independence at home
4. Tackling wider determinants of health
5. Mental health



Health in All Policies

a manual for local government



in good health

Why health and social care services in Norfolk and Waveney need to change



PREVENTION & PROMOTING INDEPENDENCE

- An approach for prevention across the whole system, and in each part of the system.
- Reducing lifestyle risks and targeting high risk groups.
- Promoting independence and self-care through systematic and proactive management of health and social care circumstances.

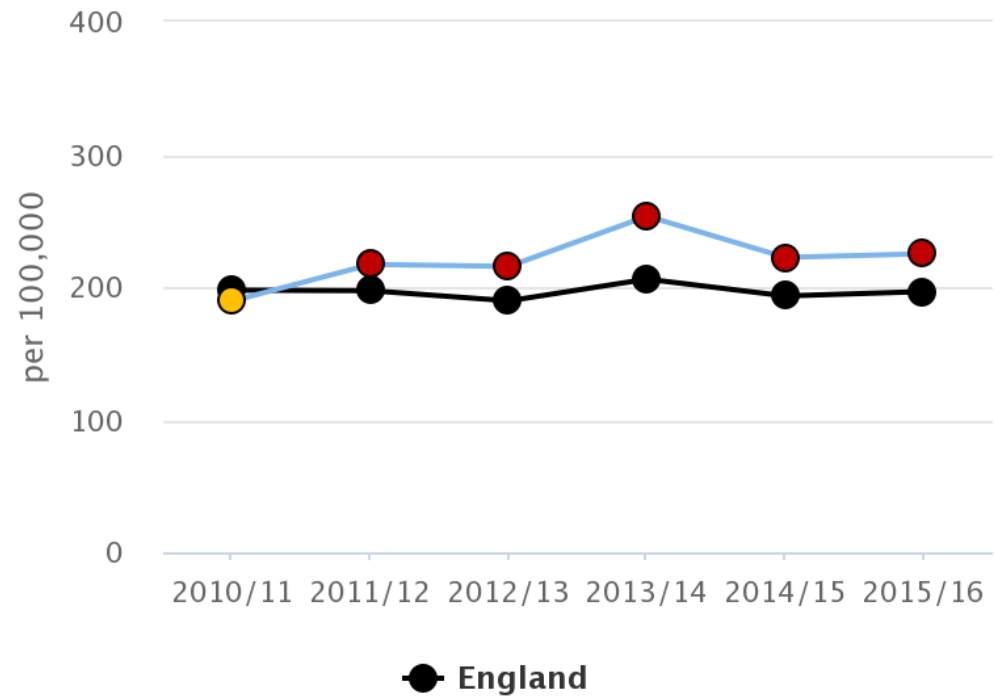


Mental Health



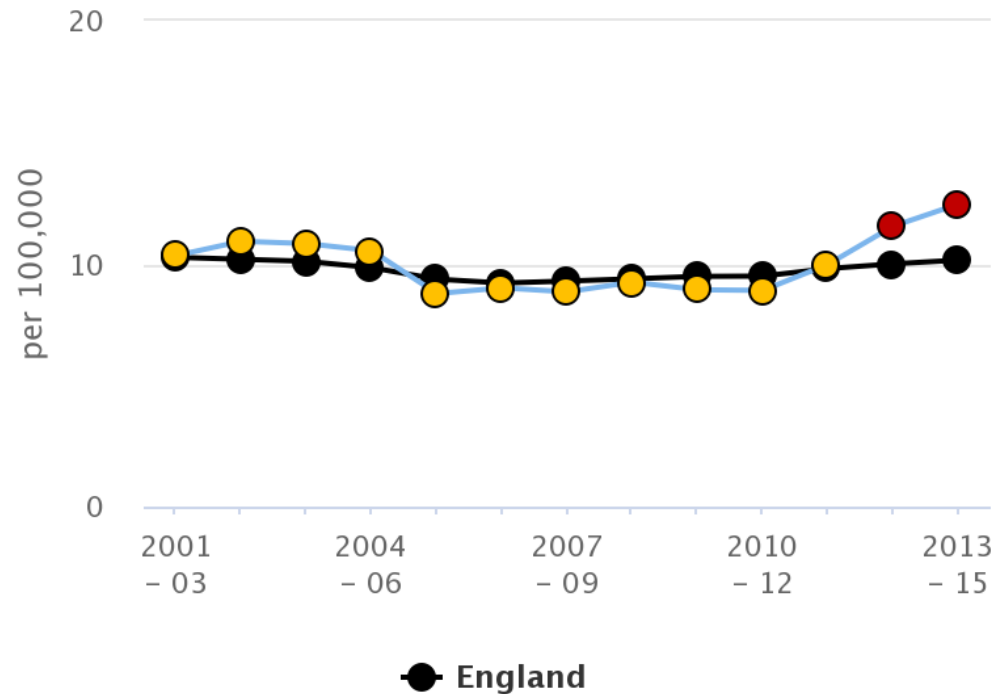
Prevention: Mental Health

2.10ii - Emergency Hospital Admissions for Intentional Self-Harm - Norfolk



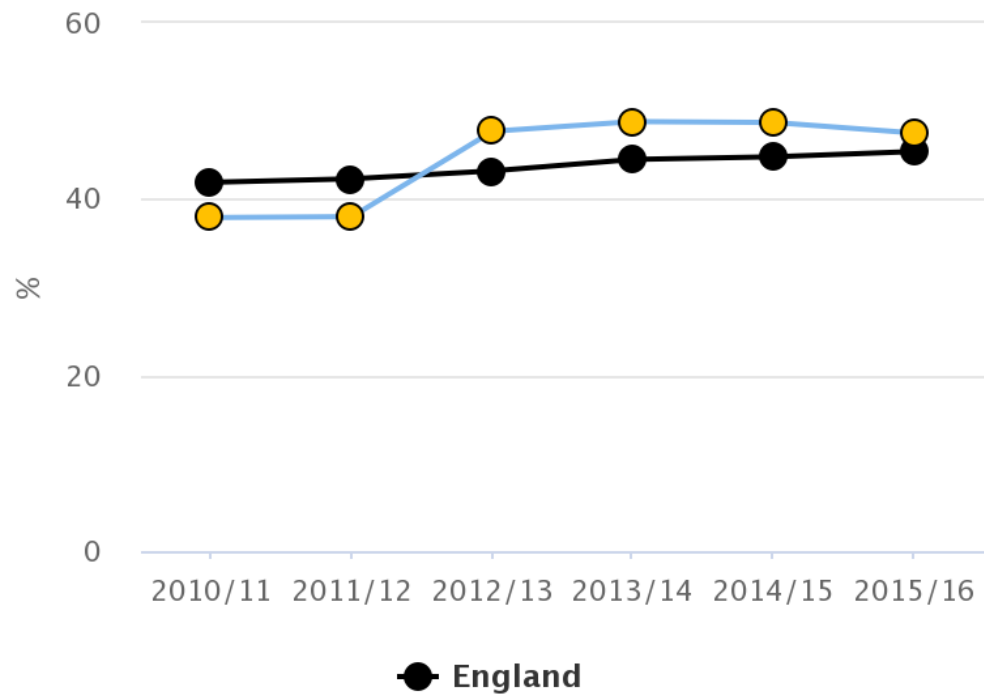
Prevention: Mental Health

4.10 - Suicide rate (Persons) - Norfolk



Prevention: Mental Health

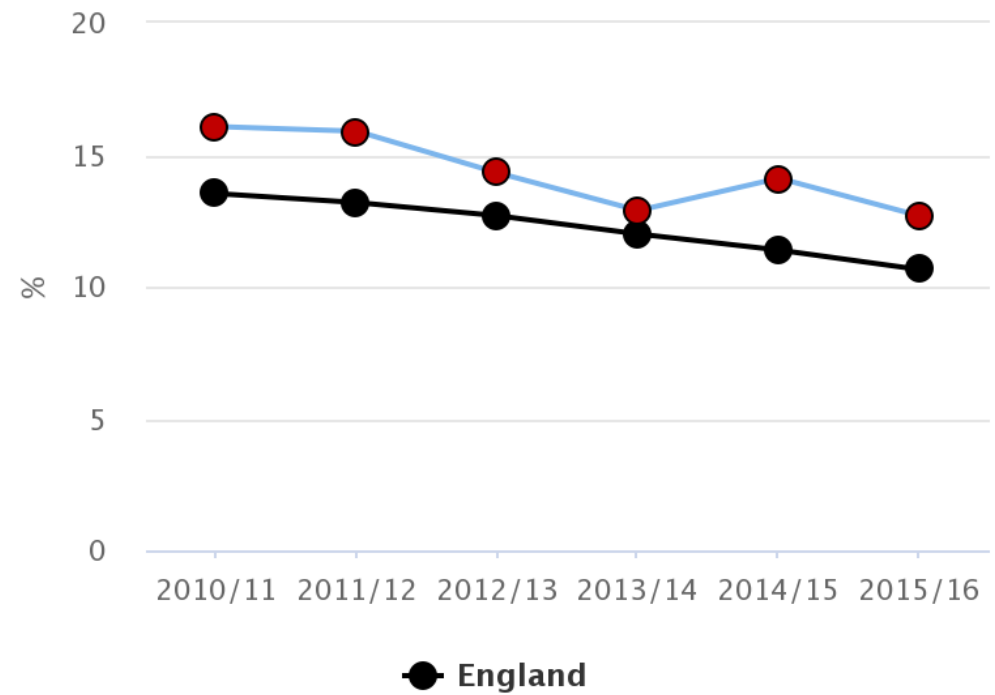
1.18i – Social Isolation: percentage of adult social care users who have as much social contact as they would like – Norfolk



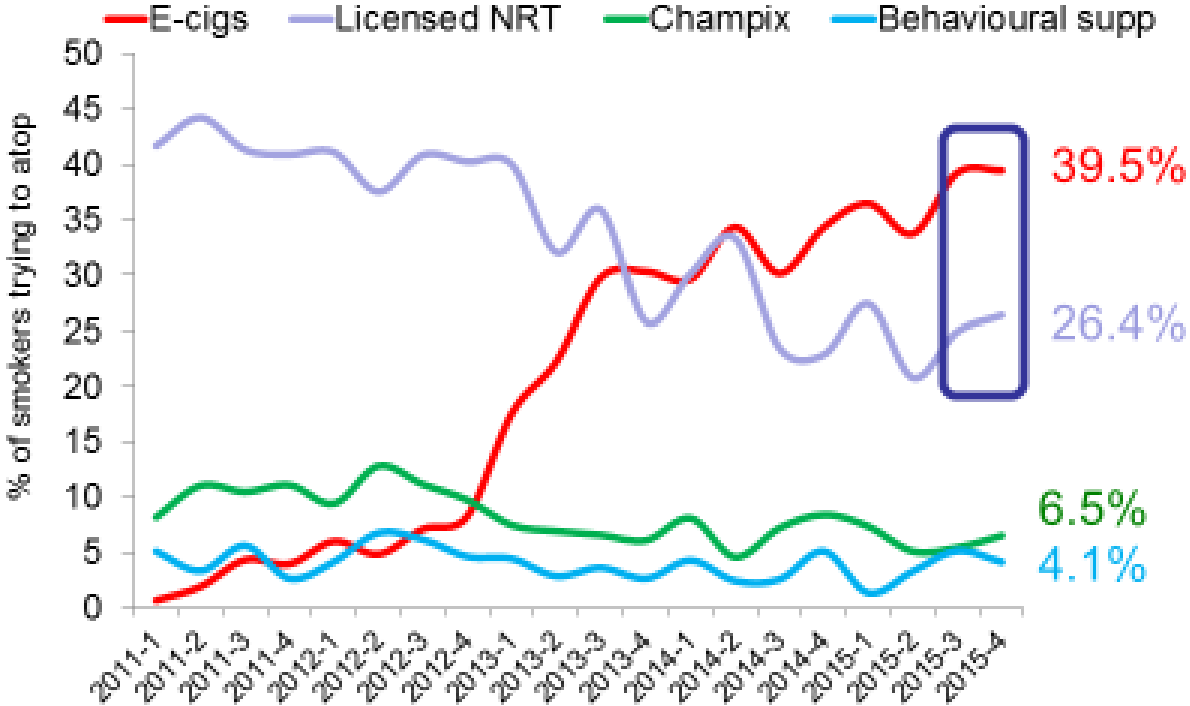
Smoking

PREVENTION: Smoking

2.03 - Smoking status at time of delivery - Norfolk



Aids used in quit attempt in past 12 months



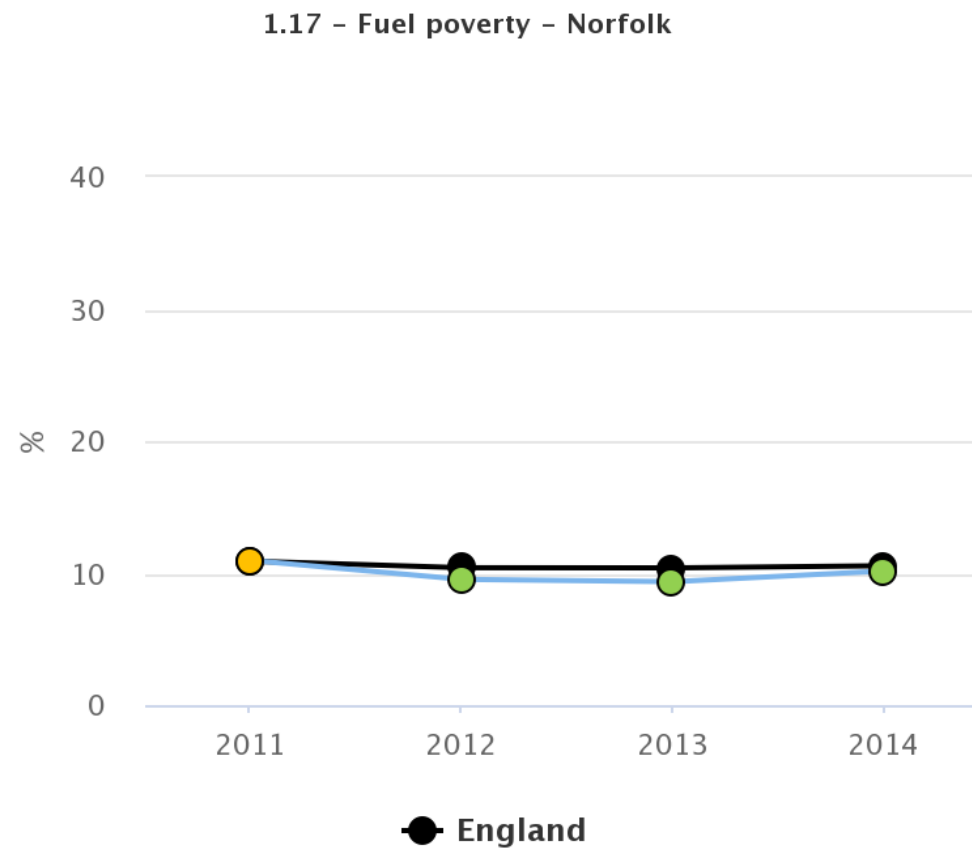
N=7,796 adults tried to stop or who stopped in the past year; respondents could use more than one method

www.smokinginengland.info/latest-statistics

INEQUALITIES

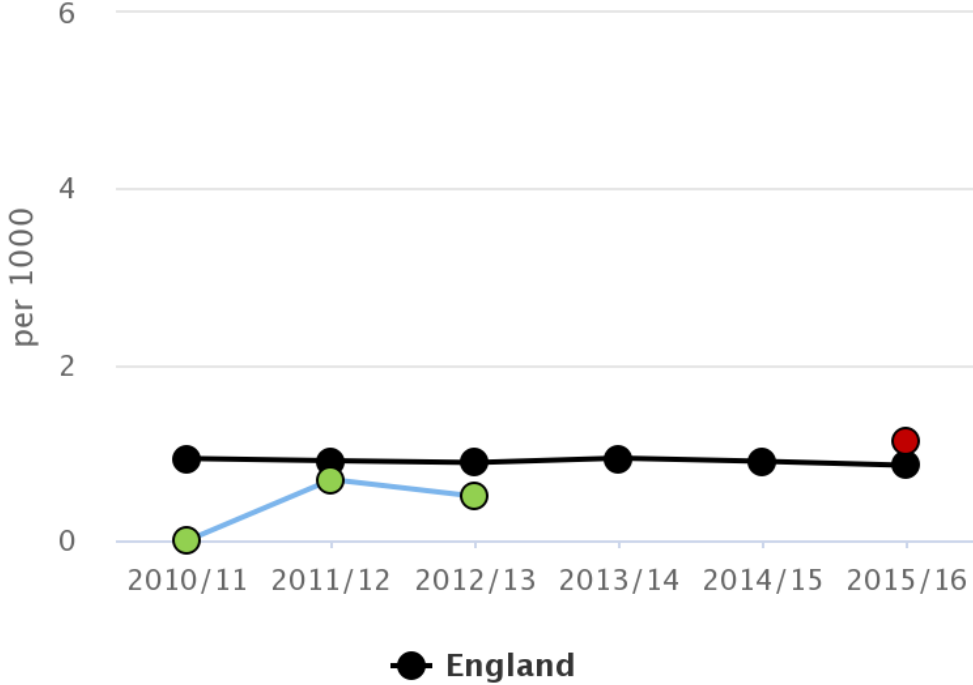
- Proportionate: providing services with a scale and intensity reflecting the level of disadvantage.
- Identifying how proactive services can be provided to people who are not reached by mainstream services.
- Tackling the social determinants of health, in order to save money and create value.

INEQUALITIES: Housing



INEQUALITIES

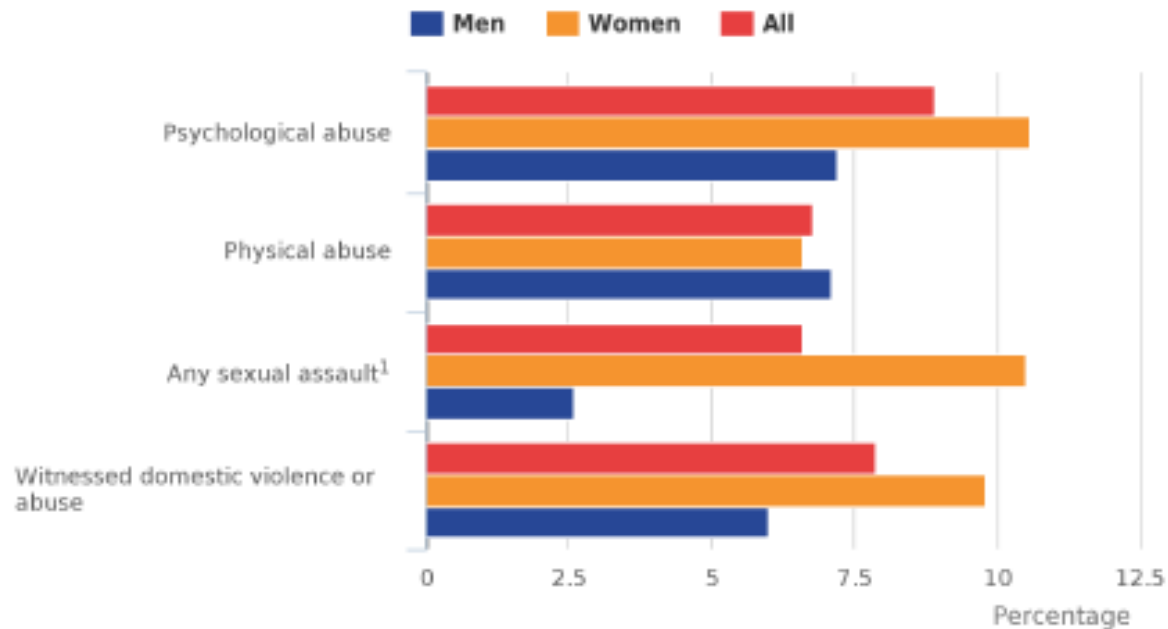
1.15i - Statutory homelessness - Eligible homeless people not in priority need - Norfolk



INTEGRATION

- Working together across the system to identify affordable pathways of care
- Only propose structural/ organisational changes where it is deemed to be essential for effective delivery of services.
- Collaborating in the delivery of person centred care, irrespective of the employing organisation.
- Ensuring integration extends beyond health and social care to the wider services which support local communities.

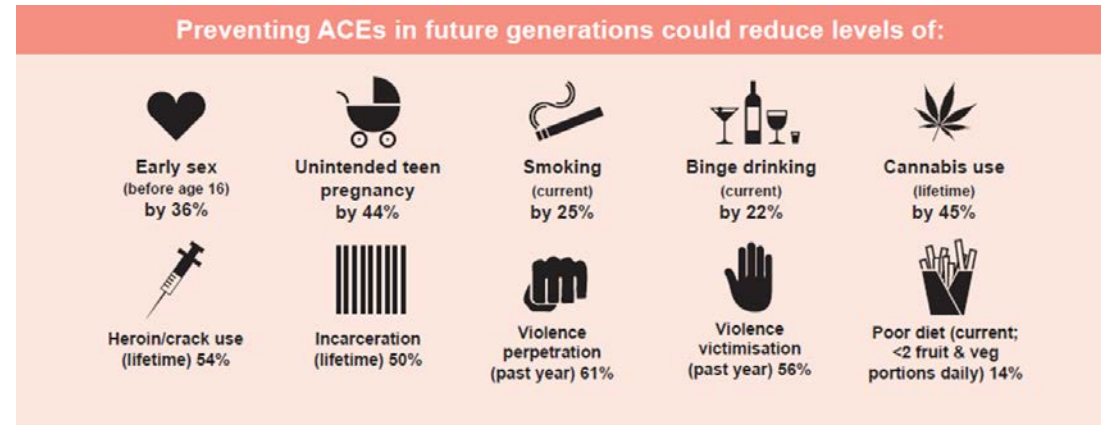
Prevalence of abuse during childhood among adults aged 16 to 59



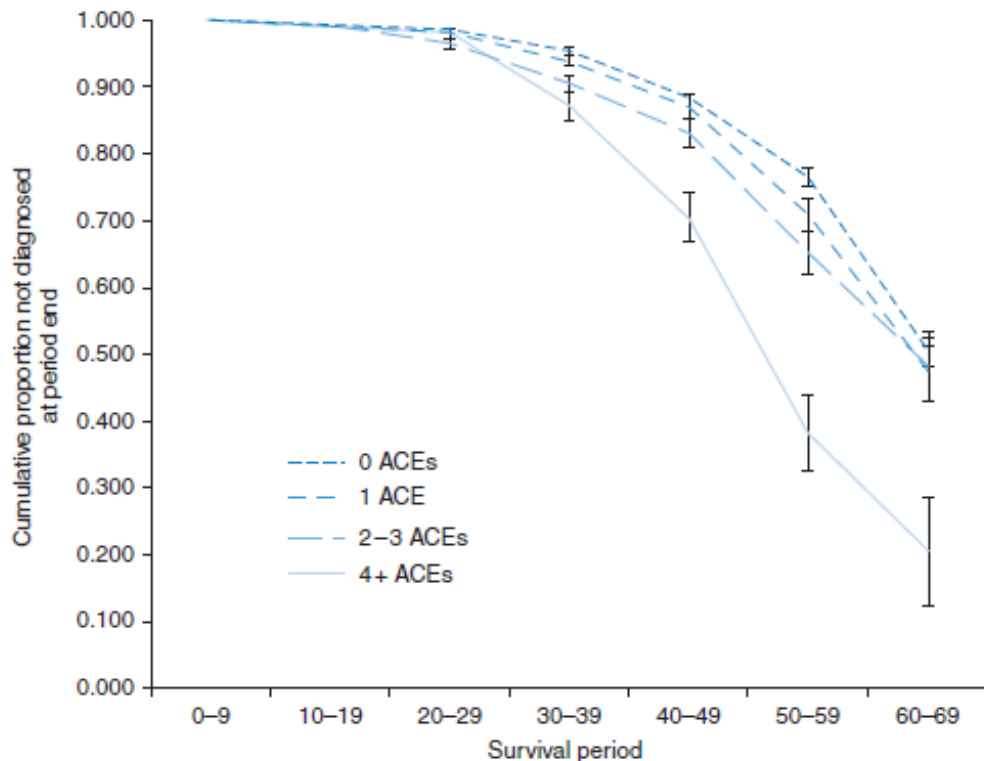
- Psychological
- Physical
- Any sexual assault
- Witnessed Domestic Abuse

Adverse Childhood Experiences (ACE) Study

- Child Maltreatment
- Domestic Violence
- Mental Illness
- Alcohol abuse
- Drug Use
- Incarceration parent
- Parental conflict & Separation



Adults never diagnosed with a major disease



- Cancer
- Stroke
- Diabetes
- Cardio Vascular disease
- Liver disease
- Lung disease

Enjoy the day 😊

louise.smith@norfolk.gov.uk

<http://www.norfolkdata.net/jsna>